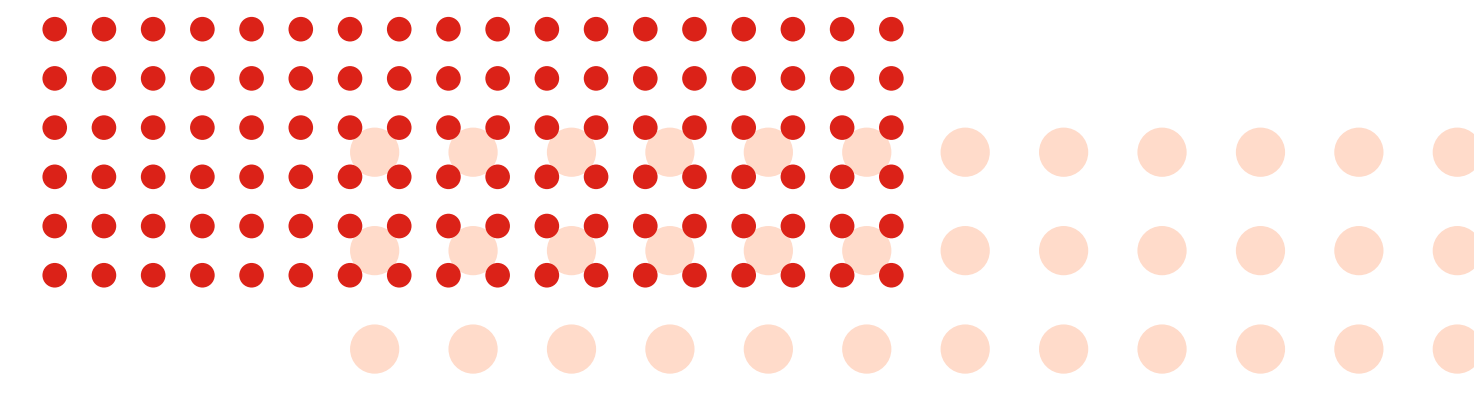


IP Infrastructure and Security Products

To provide our customers with the industry's best value in highly available, secure and easy to manage network solutions.



OmniAccess WLAN

Modular Chassis Wireless Switch

- OmniAccess 6000: 4 slots + 2/3 power supplies

- Modules**
- 2 x GBIC GigE ports
 - 2 x GBIC GigE ports and 24 x RJ45 10/100 ports with or without PoE
 - Supervisor 1 (max. 2 per chassis)
 - Supervisor 2 (max. 2 per chassis)
 - Supervisor 3 with two integrated XFP and ten SFP ports (max. 4 per PS4-chassis)



OmniAccess 6000

Standalone Wireless Switch

- OmniAccess 4302: 1 x RJ45 10/100 port and 1 x RJ45 10/100/100 port
- OmniAccess 4306 : 8 x RJ45 10/100 ports (including 4 with PoE+) and 1 x RJ45 10/100/1000 port
- OmniAccess 4306G: 6 x RJ45 10/100/1000 ports (including 4 with PoE+) and 2 x SFP GigE ports
- OmniAccess 4306GW: 6 x RJ45 10/100/1000 ports (including 4 with PoE+), 2 x SFP GigE ports and 1 x built-in 802.11a/b/g/n access point
- OmniAccess 4304/8: 8 x RJ45 10/100 PoE ports and 1 x GigE port
- OmniAccess 4324: 24 x RJ45 10/100 PoE ports and 2 x GBIC GigE ports
- OmniAccess 4504/4604/4704: 4 x GigE combo ports



OmniAccess 4302 OmniAccess 4304

- Wi-Fi access points**
- Indoor and outdoor models
 - Purpose-built teleworker / small branch office models
 - Integrated or external antenna connectors
 - 802.3af PoE or external powered
 - IEEE 802.11a, IEEE 802.11b/g and IEEE 802.11n draft
 - IEEE 802.11a/b/g upgradeable to IEEE 802.11a/b/g/n draft



- Benefits**
- Highly scalable and manageable, from 4 to 1,000's of access points
 - Adaptive Radio Management for easy deployment optimized usage
 - Integrated Firewall for clear delineation of wired and wireless network
 - User based network access control to comply with enterprise policies
 - Advanced support of IP telephony with SIP and OmniPCX
 - Seamless central and branch deployment, even for home use
 - Central management
 - Meshing technology to reduce cabling, indoor and outdoor
 - Effective teleworker / small branch solution with advanced wireless services, state of the art security and simplified operations

- Typical deployment**
- Medium and large enterprise indoor Wi-Fi
 - Home workers
 - Campus Outdoor Wi-Fi Access
 - Warehouses
 - Wireless interconnection of LANs

Services

Set up, secure and maintain your IP infrastructure with the support of an experienced partner. To complement the services of our Business Partners, Alcatel-Lucent Services for Enterprise offers a full range of professional and support services. These services apply to all Alcatel-Lucent IP Infrastructure and Security products, matching end user requirements to ensure superior experience.

www.alcatel-lucent.com/enterprise/services

OmniSwitch 6400

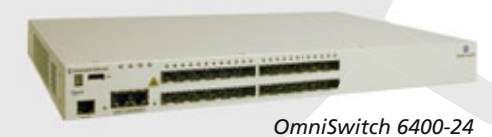
Value Stackable Gigabit Ethernet LAN Switch

- 24 and 48 GigE RJ45 / PoE ports / 4 combo ports
- 24 and 48 GigE PoE ports / 4 combo ports
- 24 GigE/FE SFP ports / 2 combo ports
- Models have redundant AC, DC or PoE power supplies

Benefits

- Convergence: Auto-QoS, dynamic PoE power, LLDP, multicast replication
- High Availability: Virtual chassis at 40G speed, sub 50ms reconvergence, dual-home link, ethernet ring protection
- Network services: Advanced L2 switching, QoS and ACL policies, Static/RIP routing
- Edge security: Access Guardian 802.1x and Web-based network access control, host compliance check, quarantine
- Ethernet Access: L2VPN services (VLAN stacking), Ethernet OAM and QoS SLA, multicast VLANs, MEF certified
- Investment protection: low power, smaller depth, IPv4/IPv6 dual stack, AOS field-proven operating software managed by OmniVista NMS and 5620 SAM

- Typical deployment**
- Small to mid-sized enterprises and branch offices LAN
 - Ethernet Access CPE and MDU for metro and managed services



OmniSwitch 6400-24

OmniSwitch 6250

Value Stackable Fast Ethernet LAN Switch

- Enterprise models: 24 FE RJ45 and 2 FE PoE ports / 2 GigE combo ports
- Redundant external AC or PoE power supplies
- Metro models: 24 and 8 FE RJ45 ports / up to 4 GigE ports configurable
- Redundant external AC or DC power supplies

- Benefits**
- Converged services: Auto-QoS, dynamic PoE power, LLDP, multicast replication
 - High Availability: virtual chassis at 10G speed, sub 50ms reconvergence, dual-home link
 - Network services: advanced L2 switching, QoS and ACL policies, Static/RIP routing
 - Edge security: Access Guardian 802.1x and Web-based network access control
 - Ethernet Access (metro models): L2VPN services (VLAN stacking), Ethernet OAM and QoS SLA, multicast VLANs, MEF certified
 - Investment protection: half-rack wide chassis for space savings, very low power, fanless, IPv4/IPv6 dual stack, AOS field-proven operating software managed by OmniVista NMS and 5620 SAM

- Typical deployment**
- Small to mid-sized enterprises and branch offices LAN
 - Ethernet Access CPE and MDU for metro and managed services



OmniSwitch 6250-P24 OmniSwitch 6250-8M

OmniStack 6200

Value Stackable Fast Ethernet LAN Switch

- 12, 24 and 48 FE RJ45 or PoE / 2 GigE RJ45 / 2 GigE combo ports
- 24 FE SFP / 2 GigE RJ45 / 2 GigE combo ports
- All models support redundant external power supplies

- Benefits**
- Converged services: 802.3af PoE, LLDP, multicast replication
 - High Availability: virtual chassis at 4G speed, up to 8 units
 - Network services: L2 switching, dynamic VLANs, QoS and ACL policies
 - Edge security: 802.1x, Guest VLAN
 - Ethernet Access: VLAN stacking, multicast VLANs
 - Investment protection: low power, small depth, industry-standard CLI and web-based management, OmniVista NMS support

- Typical deployment**
- Small enterprise, branch offices
 - Residential Ethernet Access



OmniStack 6248

OmniSwitch 6850

Advanced Stackable Gigabit Ethernet LAN Switch

- 24 and 48 GigE RJ45 / PoE ports / up to 4 combo ports
- Redundant, external AC, DC and PoE power supplies
- Available with 2 built-in 10G interfaces
- Available as FE; software upgradable to GigE
- 24 port GigE/FE SFP ports / 2 combo ports
- Redundant, external AC and DC power supplies
- 2 built-in 10G interfaces, AC and DC PS

- Benefits**
- Convergence: Auto-QoS, dynamic PoE power, LLDP, multicast replication, standard and high-power PoE power supplies
 - High Availability: Virtual chassis at 40G speed, sub 50ms reconvergence, dual-home link, ethernet ring protection
 - Network services: Advanced L2 switching, Advanced L3 routing including OSPF, BGP, IS-IS, DVMRP, PIM, VRRP and BFD, extensive QoS and ACLs policies, server load balancing
 - Comprehensive edge security: Access Guardian 802.1x and Web-based network access control, host compliance check, embedded traffic anomaly detection and quarantine easily managed through centralized policies and profiles
 - Ethernet Access: L2VPN services (VLAN stacking), Ethernet OAM and QoS SLA, multicast VLANs, MEF certified
 - Investment protection: low power, replaceable power supplies, small depth configuration, IPv4/IPv6 dual stack, AOS field-proven operating software managed by OmniVista NMS and 5620 SAM

- Typical deployment**
- Mid to large-sized enterprises, LAN edge and aggregation
 - Data center Top of Rack for servers access
 - Ethernet Access MDU for metro services



OmniSwitch 6850-U24X



OmniSwitch 6850-P48X

OmniSwitch 6855

Hardened advanced Gigabit Ethernet LAN Switch

- 12 and 24 GigE RJ45 / up to 4 combo ports
- 8 and 24 port GigE/FE SFP ports / 2 combo ports
- 24 GigE/SFP port with 2 built in 10G interfaces
- All models support redundant external AC or DC power supplies

- Benefits**
- Hardened and Industrial Ethernet: Ruggedized design (-40° to 70°C operating temperature), withstands greater shock, vibrations and electromagnetic conditions
 - Convergence: Auto-QoS, dynamic PoE power, LLDP, multicast replication, AC and DC PoE power supplies
 - High Availability: Virtual chassis at 40G speed, long distance stacking (10km) for easier deployment, sub 50ms reconvergence, dual-home link, ethernet ring protection
 - Network services: Advanced L2 switching, Advanced L3 routing including OSPF, BGP, DVMRP, PIM, VRRP, BFD and multi-VRF, extensive QoS and ACLs policies
 - Comprehensive Edge security: Access Guardian 802.1x and Web-based network access control, host compliance check, embedded traffic anomaly detection and quarantine easily managed through centralized policies and profiles
 - Ethernet Access: L2VPN services (VLAN stacking), Ethernet OAM and QoS SLA, multicast VLANs, MEF certified
 - Investment protection: low power, replaceable power supplies, small depth configuration, fanless switch design, IPv4/IPv6 dual stack, AOS field-proven operating software managed by OmniVista NMS and 5620 SAM

- Typical deployment**
- Transportation, utilities, energy, defense
 - Video surveillance networks, outdoor enterprise and service provider deployments



OmniSwitch 6855-U24



OmniSwitch 6855-14 OmniSwitch 6855-U10

OmniSwitch 9000E

Modular L2/L3 MPLS LAN Switch

- High availability: Smart Continuous Switching, In Service Software Upgrade, Ethernet Ring Protection, Bidirectional Forwarding detection
- Network services: VRF, MPLS (VPLS), advanced L2 switching, L3 routing, QoS and ACL
- Extensive security: Network Access Control, behavior monitoring and attack containment, easily managed through policies and profiles
- Investment protection: MPLS, IPv6, 10GigE, support, low power dissipation
- Metro Ethernet services: MEF certified, VLAN stacking, Ethernet OAM, Multicast VLANs
- Managed by OmniVista NMS

- Interface modules**
- 24 x RJ45 GigE ports
 - 24 x SFP GigE ports
 - 2 x XFP 10-GigE ports
- Benefits**
- High availability: Smart Continuous Switching, In Service Software Upgrade, Ethernet Ring Protection, Bidirectional Forwarding detection
 - Network services: VRF, MPLS (VPLS), advanced L2 switching, L3 routing, QoS and ACL
 - Extensive security: Network Access Control, behavior monitoring and attack containment, easily managed through policies and profiles
 - Investment protection: MPLS, IPv6, 10GigE, support, low power dissipation
 - Metro Ethernet services: MEF certified, VLAN stacking, Ethernet OAM, Multicast VLANs
 - Managed by OmniVista NMS

Typical deployment

- Large enterprise; core switching, MPLS service access
- Data center; End-of-Row and Core switching



OmniSwitch 9700E OmniSwitch 9800E

OmniSwitch 9000

Modular L2/L3 LAN Switch

- OmniSwitch 9600: 4+1 slots, up to 192 GigE RJ45 or 24 x 10-GigE ports
- OmniSwitch 9700: 8+2 slots, up to 384 GigE RJ45 or 48 x 10-GigE ports
- OmniSwitch 9702: 8+2 slots, up to 384 GigE RJ45 or 48 x 10-GigE ports (NEBS Ready)
- OmniSwitch 9800: 16+2 slots, up to 768 GigE RJ45 or 96 x 10-GigE ports
- Redundant DC or AC power supplies

- Interface modules**
- 24 x GigE RJ45 ports with or without PoE
 - 24 x GigE SFP ports
 - 48 x GigE RJ45 ports
 - 20 x FE RJ45 (upgradeable to GigE) + 2 SFP GigE/FE ports
 - 2 x 10-GigE XFP ports
 - 6 x 10-GigE XFP ports
 - Dedicated Shelf for PoE power supplies (AC only, up to 2400W)

- Benefits**
- High availability: Dual CMM Smart Continuous Switching, Ethernet Ring Protection, Bidirectional Forwarding detection
 - Network services: AOS Advanced L2 switching, L3 routing, QoS and ACL
 - Extensive security: Network Access Control, behavior monitoring and attack containment, easily managed through policies and profiles
 - Investment protection: IPv6, 10GigE, PoE support, low power dissipation
 - Metro Ethernet services: MEF certified, VLAN stacking, Ethernet OAM, Multicast VLANs
 - Managed by OmniVista 2500 and 5620 SAM

- Typical deployment**
- Large and medium enterprise; core and distribution switching
 - Large and medium enterprise; server farm connectivity
 - Data center; end of row switching
 - Large enterprise; wiring closet including PoE



OmniSwitch 9600 OmniSwitch 9700 OmniSwitch 9800

7750/7710/7705 Service Router and 7450 Ethernet Service Switch

Modular IP/MPLS Router/Switch

- 7710 Service Router c4 and c12
- 7750 Service Router 1, 7, 12 and c12
- 7450 Ethernet Service Switch 1, 6, 7 and 12
- 7705 Service Aggregation Router F and 8

- Interface modules**
- FE RJ45/SFP
 - GigE RJ45/SFP
 - XFP/SimplexSC 10-GigE
 - DS1/E1 and DS3/E3
 - SFP: STM-1/OC-3, STM-4/OC-12, STM-16/OC-48
 - Simplex SC STM-64/OC-192
 - SFP: ATM STM-1/OC-3, STM-4/OC-12
 - Serial Data Interface (V.35, X.21, RS-232)

Various port densities, model dependent



7710 SR-c4 7750 SR-12 7705 SAR-8 7450 ESS-1 7450 ESS-6

OmniAccess 5510 USG

Fixed form factor Unified Services Gateway

- QA5510-TE: 1 E1/T1 port
- QA5510-SR: 1 serial port
- QA5510-AA: 1 port ADSL2+ Annex A
- QA5510-AB: 1 port ADSL2+ Annex B
- All models have 1 routed port FE RJ45, 4 switched ports FE RJ45

- Benefits**
- Rack or desktop deployment
 - No fan; low noise
 - Majority of routing protocols including VRF-Lite and PBR
 - Wire-speed performance with multiple services enabled
 - Advanced Security: Stateful firewall, NAT/DNAT, IPSec VPN, IDS/IPS
 - Unified VoIP services with survivability for SIP and Alcatel-Lucent phones
 - GUI wizards to simplify configuration

- Typical deployment**
- WAN connectivity for small and medium business
 - Unified services for small branch offices
 - Carrier provided managed services



OmniAccess 5510-TE OmniAccess 5510-SE

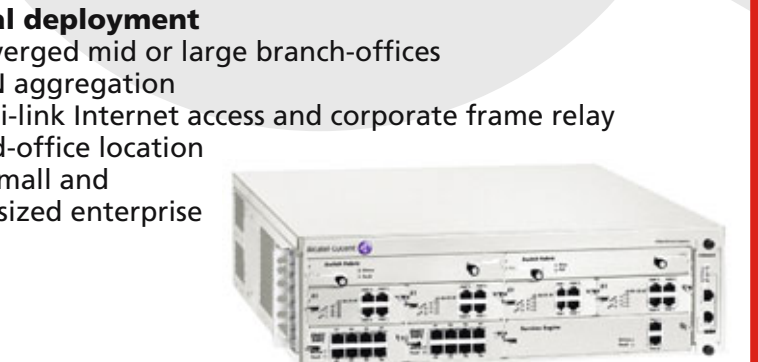
OmniAccess 700 USG

Modular Unified Services Gateway

- QA780: Modular 6 interface module slot chassis with 2 x RJ45 GigE ports
- QA740: Modular 2 interface module slot chassis with 2 x RJ45 GigE ports

- Benefits**
- Flexible and expandable via:
 - 4 Port T1/E1 interface module
 - 4 Port Universal Serial (64Kbps - 2Mbps) interface module (V.35/X.21/RS-232)
 - 8 Port RJ45 L2-GigE interface module
 - Majority of routing protocols including VRF-Lite and PBR
 - Wire-speed performance with multiple services enabled
 - Advanced Security: Stateful firewall, NAT/DNAT, IPSec VPN, IDS/IPS
 - Unified VoIP services with survivability for SIP and Alcatel-Lucent phones
 - GUI wizards to simplify configuration

- Typical deployment**
- Converged mid or large branch-offices
 - WAN aggregation
 - Multi-link Internet access and corporate frame relay
 - Head-office location for small and mid-sized enterprise



OmniAccess 780

VPN Firewall Brick

Distributed VPN/Firewall, security appliance

- Brick 50, 150, 700, 1200 and 1200 HS
- From 3xFE RJ45 ports through 14xGigE RJ45+6 GigE SFP ports
- Model-dependent AC, DC, and/or redundant power supplies

- Benefits**
- Robust security using Bell-Labs patented firewall technology
 - No network changes through overlay security
 - Secure SIP, H.323 VoIP and OmniPCX
 - Centralized management for low cost of ownership
 - Business-critical reliability; resiliency without session loss
 - Scalable, low cost IPsec VPN capabilities for remote workers
 - Comprehensive QoS

- Typical deployment**
- Firewall to protect the LAN at any given site
 - VPN concentrator at a central site
 - Specialized security for real time applications



Brick 1200

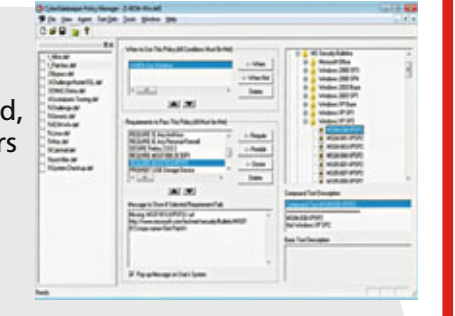
InfoExpress CyberGatekeeper

Enterprise Host Integrity Check Solution

- CyberGatekeeper 6.0 Server - Appliance/Software
- CyberGatekeeper 6.0 Agent

- Benefits**
- Wide range of supported end systems
 - Keeps unhealthy/insecure devices off your network
 - Ensures 100% of endpoints on your network are compliant
 - Protects the network against vulnerabilities in end systems
 - Automatic remediation of non-compliant PCs
 - Seamless integration with OmniSwitch

- Typical deployment**
- Large and mid-sized enterprises
 - Point driven security for wired, wireless or remote (VPN) users
 - Seamless security for wired, wireless and remote (VPN) users



CyberGatekeeper Policy Manager

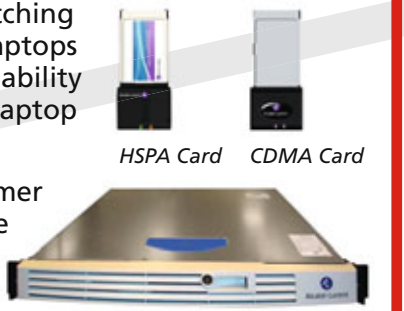
OmniAccess 3500 Nonstop Laptop Guardian

The market only, always-on, secure, independent mobile security platform that provides 24/7 visibility and control over laptops worldwide

- Gateways - support either 500 or 16,000 users
- NLG 3G devices - PCMCIA-card or USB using NLG Capable Mifi 2352 device

- Benefits**
- Unique always-on implementation provides 24/7 secure mobile laptop data, access and management
 - Greater visibility and control over remote devices
 - Lower IT costs by simplifying patching and application installation to laptops
 - Dramatic reduction of risk and liability around data on a lost or stolen laptop

- Typical deployment**
- Gateway deployed within customer network or as a managed service
 - NLG 3G device deployed for each user laptops



HSPA Card CDMA Card Gateway Server

OmniAccess 8550 Web Services Gateway

Service oriented appliance for corporate-wide secure and compliant infrastructure

- Standalone
- High availability

- Benefits**
- Ensures secure access to sensitive data
 - Consolidated audit logs demonstrate compliance
 - Run-time policy enforcement across information systems
 - Identity mapping ensures corporate wide consistent policy
 - Ensures data is kept private via encryption
 - Can accept digital identities issued by partners
 - Reduces risk of information security breaches
 - Hardened appliance for scalable, reliable & secure services

- Typical deployment**
- Data center deployment to secure services within the organization
 - DMZ deployment to secure services with partners



OmniAccess 8550 WSF

OmniAccess Safeguard

Application Level Network Access Control Appliance

- OAG-2400
- OAG-1000
- OAG-100

- Benefits**
- Secure L2-L7 LAN Network Access Control
 - Seamless Network Security Policy Deployment & Management
 - Full visibility of network security state through real-time Security Dashboards
 - Secure Guest / Contractor Access Management
 - Protection from Zero-day Attacks / Malware through Behavior Anomaly Detection
 - End-point Health Check prior to network admission
 - Managed by OmniVista Safeguard Manager

- Typical deployment**
- In-line in between existing LAN access and the aggregation or core



OmniAccess 2400

Management Systems

OmniVista 2500 Network Management System

- Client/server based application to manage networks with up to thousands of devices
- Network-wide operations for monitoring, troubleshooting and bulk configuration
- Quarantine Manager for intrusion detection and containment
- Access Guardian management for User Network Profiles
- OneTouch, network wide QoS and ACL configuration



OmniVista 2500 NMS

OmniVista 3600 Air Manager

- Wireless network management solution that gives IT full visibility and centralized control over its wireless infrastructure
- Vendor neutral, allowing for management of 3rd party wireless products
- Designed specifically to support the largest wireless networks with tens of thousand of devices
- Detailed monitoring views and location maps for every user and device on the network.



OmniVista 3600

VitalSuite Performance Management

- Network/applications performance management
- Wide range of services ranging from end-user applications to network infrastructure service
- Comprehensive management for data networks, applications, voice and contact center



VitalSuite

VitalQIP DNS/DHCP IP Management

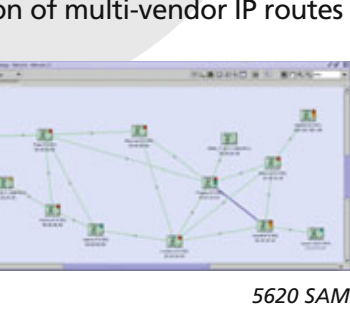
- Centralized IP address inventory and management
- Unsurpassed DNS/DHCP servers
- Automated configuration of multi-vendor DNS/DHCP
- Latest technology support - VoIP, ENUM, IPv6, mobile HSD, IP video
- Alcatel-Lucent Appliance available



VitalQIP

5620 Service Aware Manager

- Visualization of service topology and status
- Simplify service provisioning with GUI-based templates
- Comprehensive fault management system to assist with root cause analysis
- Graphical IP topology visualization of multi-vendor IP routes

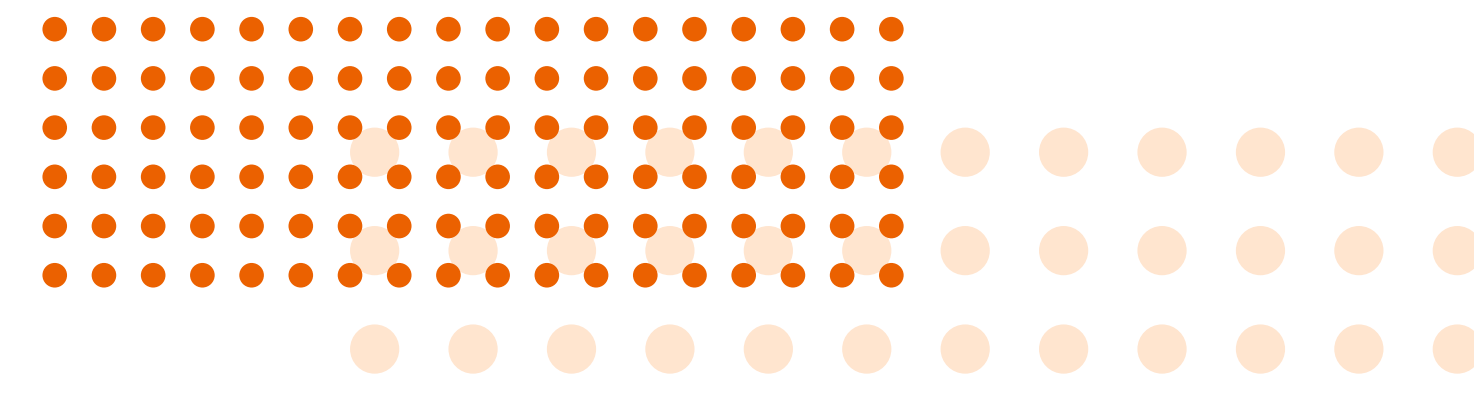


5620 SAM

42911

IP Communication Products

To provide our customers with the industry's best value in feature-rich and open standard communication system.



Wireless Terminals

300 DECT

- Graphic display (pixels) 96 x 48
- Monochrome LCD
- Backlight Display (blue)

300 EX DECT

- Designed for hazardous environments

400 DECT

- 98 x 56 Color LCD with 4,096 colors
- Speakerphone
- Backlight Display (white) and keypad (blue)
- Headset connection

Common Features

- 120 (h) x 45 (w) x 22 (d) mm
- 110 g
- Vibrate mode (direct key control)
- DECT/GAP
- Basic charger
- Dual charger

IP Touch 310 WLAN

- 137 (h) x 51 (w) x 23 (d) mm

IP Touch 610 WLAN

- 145 (h) x 51 (w) x 23 (d) mm
- Push-to-talk feature

Common Features

- 111 g
- Graphic display (pixels) 128 x 96 Monochrome LCD
- Speakerphone
- Backlight Display and keypad
- Vibrate mode
- Headset connection
- Wireless standards IEEE 802.11 a/b/g
- Basic charger
- Dual charger (including configuration cradle through USB link for software upgrade)
- Quad charger

Wireline Terminals

4068

- Adjustable graphical display
- 240x320 pixels ¼ VGA
- 4096 colors
- Comfort handset
- Specific headset plug 3.5 mm
- Alphabetic keyboard
- Bluetooth® 1.2 wireless techn.
- Additional PC connectivity with switch
- 2 Gigabit Ethernet ports

4038

- Adjustable graphical display
- 100x160 pixels
- 4 gray levels
- Comfort handset
- Specific headset plug 3.5 mm
- Alphabetic keyboard
- Additional PC connectivity with switch
- 2 Gigabit Ethernet ports

4028

- Adjustable graphical display
- 64x128 pixels
- Black & white
- Comfort handset
- Specific headset plug 3.5 mm
- Alphabetic keyboard
- Additional PC connectivity with switch
- 2 Gigabit Ethernet ports

4018

- Character display
- 20 characters
- Black & white
- Comfort handset
- Additional PC connectivity with switch
- SIP standalone option

4008

- Character display
- 20 characters
- Black & white
- Standard handset
- SIP stand-alone option

Common Features

- Hands-free mode
- External loudspeaker
- External power supply
- Dial by name
- IEEE 802.3af full compliance
- IEEE 802.1X TLS authentication
- 10/100/1000BT Auto sensing & configurable
- SIP survivability

Add-on modules

- 10 traditional keys add-on module
- 40 extra keys add-on module
- 14 keys with LCD add-on module
- Bluetooth® handset
- Headsets
- OmniTouch 4125 Conferencing module

Unified Communications and Collaboration

OmniTouch 8400 Instant Communications Suite

- Enterprise Grade Telephony
- Unified Messaging (email, fax, voice mail)
- One Number routing
- Instant Messaging (IM), Rich Presence
- Audio, Web and Video Conferencing
- Audio Messaging Delivery Service
- Dual mode cellular/WLAN management
- Roaming and seamless handover
- Openness through XML Web Services
- Security policy
- Authentication (LDAP/LDAPS, RADIUS)
- Single Sign On (NTLM)
- Confidentiality (HTTPS, LDAPS)
- N+1 Redundancy

OmniTouch 8600 My Instant Communicator

- Innovative unified communications experience
- Non-intrusive real-time communications
- Media blending, multisection appearance
- Complement to IBM environments
- Telephony/messaging services for Notes and Sametime
- IM and presence delegation with Sametime
- Audio conferencing services for Sametime
- Complement to Microsoft environments
- Telephony/messaging services for Outlook and Office Communicator 2007
- IM and presence federation with OCS 2007
- Audio conferencing services for OCS 2007
- Environment support
- Microsoft Windows XP/Vista
- Alcatel-Lucent IP Touch 8 Series (4038, 4068)
- BlackBerry, Nokia Eseries, Windows Mobile smartphones, Apple Iphone

OmniTouch 8460 Advanced Communication Server & OmniTouch 8660 My Teamwork

- Carrier grade and PBX agnostic IM, Audio, Web and Video Conferencing
- Available as stand alone or fully part of 8400 ICS

Mobility

Alcatel-Lucent 8622 My Cellular Extension

- One number/one voice mail service
- Access to enterprise grade telephony service of OmniPCX Enterprise

Alcatel-Lucent 8600 My Instant Communicator

- Instant Communication Suite UC and C service on smartphone
- One Number / One voice mail service and Visual Voice Mail

OmniPCX Enterprise grade telephony service

- Seamless handoff for dual modes
- Enterprise VoWLAN
- Cellular
- Home VoWLAN

Available on most prosumer platforms as Nokia Eseries, RIM BlackBerry, Windows Mobile 6.x, Apple Iphone based devices

Attendant Software

- Multimedia TDM attendant 4059 SBC
- Multimedia IP attendant 4059 IP
- Attendant 4059 common features
- Graphical view of waiting queues
- Direct access to called party communication resources
- Subscriber and trunks supervision
- Text messaging
- Recording of communications
- System and DECT guest management
- Dynamic Directory access key
- IP attendant Soft Phone
- IP attendant on 4068

Management Software

VitalSuite Performance Management Software

- Centrally manages network, application and service quality
- Real-time event analysis and alarming
- Out-of-the-box support
- VoIP testing of audio and signaling performance indicators
- OmniPCX Enterprise Integrated call and system monitoring
- System Level Key Performance Indicators

OmniVista 4760 NMS application suite

- Centralised management platform
- 800 OmniPCX nodes
- 100,000+ Users
- One server can manage 16,000 SIP endpoints
- 200,000 Directory entries
- 30 simultaneous web based or Java clients

Services

- User-friendly Configuration
- Network maintenance
- Operations audit
- Real-Time Alarms
- Tailored and animated Topology maps
- Multi-carrier Metering
- Performance analysis
- VoIP quality monitoring
- Company Directory
- Third-party SIP devices management
- Integration with Network Management Platforms

* Application distributed on multiple servers

Extended Communication Server

Extended Communication Server

- Compact Edition for 6-25 users
- Premium Edition for 25-200 users

Features

- Collaboration: Virtual Desktop (file, contacts, calendar sharing), Web-mail, Calendar, Contact, Tasks, Fax Server
- Unified Communications: Telephony Features with OmniPCX Office (Click-to-Call, Nomadic Extension, Voice Messaging, Transfer)
- Mobility: Mobile Virtual Desktop, Push Mobile
- IT Services: Security & Network Functions, Mail Server, Web Server
- Administration: Web-based Management, Automated Software Update

OmniTouch Contact Center

OmniTouch Contact Center Standard Edition (scalable, multinode, voice centric Contact Center)

- Scalable
- 5,000 Declared agents with possible private extension
- 1,000 CCA Soft phone agents, CCO Outbound agents, CTI supervision
- 30 CCS Supervision
- Advanced Call Routing (Skill mapping)
- 30 RTI Wallboard connections
- 8 Wall board Serial links
- 1 Work Force Management interface

OmniTouch Contact Center Premium Edition (mid sized multimedia "easy-to" Contact Center)

- Mid-sized multimedia platform
- 150 Incoming Voice Agents with CTI supervision
- 150 Outgoing Voice Preview and Predictive
- 150 Agent scripting, 150 Email Agents
- Collaborative Contact Center
- CCTeamer
- Borderless Contact Center
- Agents on any device (8 & 9 series, Mobile, SIP, business)
- Actionable CC
- 15 Visual CC (Supervisors) & visual IVR
- Exposure CC
- Developer SDK
- Openness Pack (Reporting, Workforce Management, IVR and Wallboard)

Intelligent Customer Front Door (Genesys Voice Platform)

- Scalable voice platform for self-services
- VXML oriented
- TTS / ASR

OmniTouch Contact Center 4625 CCIVR

- 120 access ports
- TTS & ASR
- Database lookup/update
- Fax / SMS

OmniGenesys Contact Center Solution

- Scalable Solution
- Unlimited number of Multi Media Blended Customer Interactions
- Inbound Voice, Outbound Voice
- Self-Service intelligent Customer Front Door
- Email
- Web Chat
- Collaboration
- CCTeamer
- Visual CC availability for EZZ migration
- Integration
- Agent Desktop
- Expert Contact
- G+ Adaptors
- SDK
- Insight
- Workforce Management
- Supervisor desktop
- Informart
- Informium
- VitalSuite Integration

Business integrated Communication Solution (BiCS)

BiCS

- Multi-services mono-server
- Up to 1,000 Users

Features

- Telephony OmniPCX Enterprise
- Support SIP/PTDM/ analog/DECT/WLAN
- Multi-sites: up to 16 media gateways / 5 network nodes
- Telephony presence
- IBM Sametime/Microsoft Outlook integration
- OmniTouch center standard edition
- Auto Attendant
- Call center < 50 agents/ 10 supervisors

Mobility

- Cellular extension (Nokia/Blackberry/ Windows Mobile)
- One Number services
- OmniTouch Unified Communications
- My Instant Communicator
- Unified messaging
- IBM Sametime/Microsoft Outlook integration
- OmniTouch center standard edition
- Auto Attendant
- Call center < 50 agents/ 10 supervisors

OmniVista 4760

- Universal directory access (LDAP)
- Reporting, accounting
- Complete openness
- Web Services, CSTA/XML

Availability

- RAID1 hot swap
- Spatial redundancy
- Passive Communication Server
- Fax server
- Up to 4 ports

OmniPCX Office

OmniPCX Office

- Compact Edition for 6-20 users (6-50 IP users)
- Unit 1 / Unit 2 / Unit 3 for 6-200 IP users

Architecture

- Unit 1: 2 free slots / Unit 2: 5 free slots / Unit 3: 8 free slots
- Integrated AC/DC power supply
- Integrated battery back-up (10mn)
- Extended back-up with external battery

Applications

- 3 to 6 party conferencing
- Web audio conferencing
- Integrated Voice
- Integrated Unified Messaging
- One Number Application, Cellular Voice Client
- Welcome Greetings
- Automated Attendant

ACD/Call Center (32 agents, 4 supervisors)

- PIMphony Soft Phone
- PC based Attendant
- Management OmniVista 4760
- CSTA (XML Web Services)
- Networking: IP Network, SIP / H323

OmniPCX Enterprise

OmniPCX Enterprise

- Architecture: Centralised, Distributed, Networked
- Performance 300,000 BHCC
- Resilience
- IP Redundancy Level 2 or 3
- 99.999% time availability
- 100 Passive Communication Servers
- 15,000 Users per Communication Server
- 15,000 IP Touch 8 series phones
- 5,000 SIP wire line phones
- 5,000 wire line TDM phones
- 5,000 DECT or Wireless LAN phones

5,000 Cellular Extensions

- 1,000 SO terminals
- 50 Attendants
- 240 Media gateways
- 50,000 Trunks per node
- 2500 SIP Trunks per node
- 100 Nodes in an ABC Network (cluster)
- 100,000 Users per ABC Network
- 24,000 Media gateways
- 255 "ABC Networks" (clusters) in a "Supra Network"

Features

- 500+ Business Telephony features
- Native SIP Controller
- Telephony features for SIP endpoints
- SIP Trunking to NGN
- Attendant Services
- Voice and fax mail
- Contact centre services
- Full feature set for DECT
- Voice over Wireless LAN
- Cellular Extension
- Survivability PCS
- Survivable Media Gateway

VoIP (Signaling & Media) Encryption

- Multi Companies/Departments
- Multiple time zones and multi-countries
- Hotel and Hospital services

Messaging Software

OmniTouch 8440 Messaging Software

- Full software, SIP
- 15,000 users per System Network
- 150,000 users per Network
- Datacenter ready, G.729 multiple timezones
- Media server can be distributed
- Unified messaging with IBM, Microsoft and IMAP4 email engines

OmniTouch 8450 Fax Software

- Full software, SIP
- Up to 4 ports embedded into ECS, BiCS, and 8400 ICS
- Up to 30 ports
- Datacenter ready
- Generic solution for all fax environments
- Interfaces with multifunction devices
- Outlook, BlackBerry, and Notes email clients
- Web interface
- SendFax client
- Print-to-Fax in all desktop applications

Security

Security

- System Authentication
- Radius authentication
- 802.1X (MDS & TLS) IP Touch authentication
- System Security
- OmniPCX Enterprise Embedded filtering mechanisms
- Managed IP Touch PC port, VLAN Tagging
- System management (dual port, SSH, SSL, SNMPv3, etc.)
- System Integrity
- Media Gateways and IP Touch binaries signatures
- Logs history: Syslog
- User Authorization
- Call barring
- Business and hospitality pre-payment
- Secured DISA

Wireless Infrastructure

Wireless LAN

- AP65, AP70, AP85 Dual band
- 12 communications in 802.11a
- 10 communications in 802.11b
- 8 communication in 802.11g
- AP120, AP121, AP124, AP125
- Mesh topology
- Remote AP support w/o WMM

Security

- WEP RC4 algorithm
- WPA 128 bits User Authentication Key
- WPA2 Advanced Encryption Standard

DECT Mobility Infrastructure per Communication Server

- 1,000 RBS per system
- 256 IBS per system
- RBS: 12 communications
- IBS: 6 communications
- Security
- 8 PAR1
- 128 bits User Authentication Key
- 64 bits Derived Cipher Key

Media Gateway

Per Communication Server

- 240 IP MG Rack 1 or Rack 3
- 120 IP MG two Rack 3
- 80 IP MG three Rack 3
- 90 Crystal IP MG M2 or M3

Crystal Media Gateway Features

- 800 TDM phones
- 5,000 IP phones
- 12 ISDN or Private PRI
- 40 ISDN BRI

IP Media Gateway Features

- 250 TDM phones
- 5,000 IP phones
- 12 ISDN or Private PRI
- 12 ISDN BRI

IP Touch Security

Architecture

- Server Security Module (SSM) for Communication Server
- Media Security Module (MSM) for IP Media Gateway and Unified Communications Application suite
- Software Security Module integrated in IP Touch 8 series phones

Features

- Integrity of call control signaling (ensuring that messages have not been modified)
- Secured downloading of binaries and configuration files in IP Phones and IP Media Gateways
- Encryption of all ToIP flows (signaling and voice)

Security

- Check of integrity with HMAC-SHA1
- Encryption with IPsec transport mode, AES algorithm (128 bits) and Standard SRTP for voice

4291151 - 08/2009 - Alcatel-Lucent Enterprise - 32, avenue Kleber - 92707 Colombes - France - RCS Paris 602 033 185. Alcatel, Lucent, Alcatel-Lucent and the Alcatel-Lucent logo, are trademarks of Alcatel-Lucent. All other trademarks are the property of their respective owners. Alcatel-Lucent assumes no responsibility for the accuracy of the information presented, which is subject to change without notice. © 2009 Alcatel-Lucent. All rights reserved. Photos: Alcatel-Lucent, Nokia, IBM Printed in EC on chlorine-free paper. Design: Art Connexion - 22410